



Post 16 options:

# A guide to planning your future



Lambeth

# Contents

Foreword	3
Choosing your pathway	4
Options available to you	5
Considering your next steps	6–7
Preparing for your future	8–9
Academic qualifications explained	10
Vocational qualifications explained	11
Where to find Lambeth post-16 provision	12
Where you can attend sixth form	13
Further education college options	14
Special Educational Needs and Disabilities information	15
Special schools	16–17
Apprenticeships and Traineeships	18
Supported Internships	19
Going to university	20
London South Bank University	21
Thinking about starting your own business	22
Ways to access financial support	23
Your possible future destinations	24–25
Frequently asked questions/my checklist	26–27



# Foreword



**Welcome to the 2022/23 edition of Post-16 options: A guide to planning your future. This booklet has been designed to help you think through your post-16 options and what learning pathways may suit you best, whether that is continuing in your academic or vocational studies, or if you decide to enter the world of work.**

The 21st century offers exciting new opportunities that can influence your future choices; from being able to access a more digitally connected world, through to the growth of new industries requiring new skills and jobs. To help young people navigate the best path for them we are very proud to have diverse offers of excellent post-16 options to support progression. A number of our schools and colleges provide a range of courses including T Levels, apprenticeships and the new state-of-the-art London South Bank Technical College, that caters to an exciting vocational and technical curriculum.

Our young people are the future, and we are committed to helping them discover next steps for post-16 options. If you are a young person with special educational needs and disabilities, Lambeth offers an extensive array of opportunities, including supported internships. You will find many of our schools and colleges in this booklet specialise in providing tailored support specific to your wants and needs.

Recent years have been very challenging globally and young people have experienced extreme disruption to their lives and access to learning. Our priority is to ensure all our young people are equipped with meaningful knowledge enabling them to become independent 21st century global citizens, with the ability and confidence to flourish and make informed career choices.

We are extremely proud of the achievements and resilience of all our young people in Lambeth and are delighted to assist you into this next phase of your learning journey. We wish you every success in achieving all of your future aspirations.

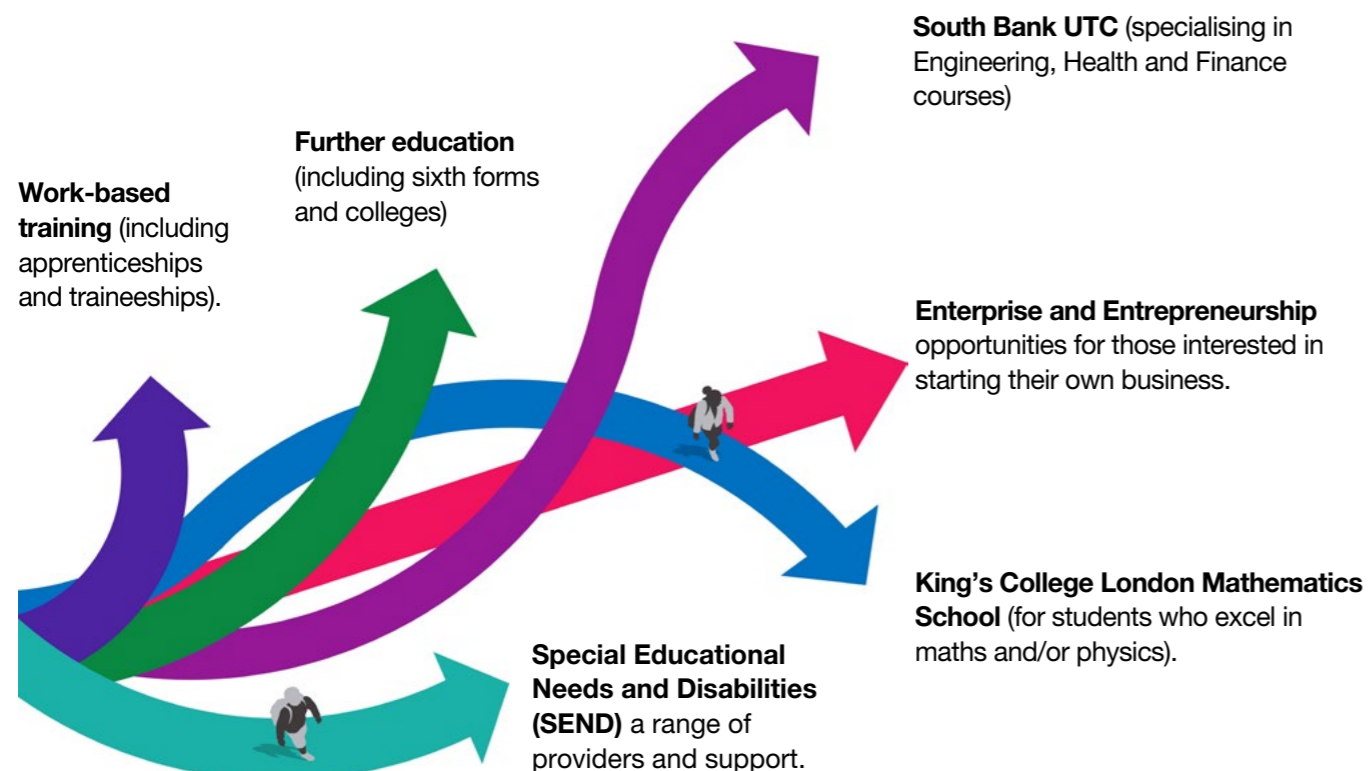
**Abrilli Phillip**  
 Director of Education, Learning and Skills, London Borough of Lambeth

# Choosing your pathway

Deciding post-16 options can be both an exciting and confusing time. The choices you make now can affect opportunities to gain the knowledge, skills and qualifications needed for future success. The good news is, there are more choices than ever about where you can study or train and this booklet offers impartial guidance to help you in taking your next steps.

Lambeth offers an excellent range of educational and work-based opportunities to suit all needs and abilities.

When considering your options it is important that you visit educational establishments, and ask questions. See the websites listed throughout this guide for information about open days and entry requirements for different types of qualifications and courses.



# Options available to you

## 1 Academic qualifications

Studying more than one subject in depth, such as A Levels

## 2 Vocational qualifications

Work related courses combining classroom learning and practical activities, such as BTECs or T Levels

## 3 Work-based qualifications

Developing the skills and knowledge needed to do a particular job. Practical learning in the workplace and with an education or training provider. Supported internships also offer young people with special needs or disabilities experience in the workplace

Level 8	Doctorate			
Level 7	Master's Degree			Degree Apprenticeship equivalent to Bachelor's or Master's Degree
Level 6	Degree			
Level 5		Foundation Degree	HND	Higher Apprenticeship equivalent to Foundation Degree
Level 4			HNC	
Level 3	A Levels	L3 Extended Diploma	T Levels	Advanced Apprenticeship equivalent to 2 A Levels
		L3 Subsidiary Diploma		
Level 2	GCSE grades 4-9 (A*-C)	L2 Diploma		Intermediate Apprenticeship equivalent to 5 GCSE grades 4-9 (A*-C)
Level 1	GCSE grades 1-3 (D-G)	L1 Certificate/ Diploma		Traineeships, Supported Internships or Pre-Apprenticeships

# Considering your next steps

Maths and English GCSEs in post-16 education are very important as they will often be an entry requirement for jobs and higher education. All 16 to 19 year-old students who have not achieved both maths and English GCSE grades 4-9 (A\*-C) must continue to study GCSE or approved 'stepping stone' qualifications in maths and/or English (eg functional skills) as a condition of enrolment onto an academic or vocational course.



I have less than 5 GCSEs and/or a below grade 4 (C), or equivalent, in maths and English

- Re-sit GCSEs (some A Level providers allow you to retake maths and English GCSEs alongside the course)
- BTEC Level 1 or 2 (depending on your grade and how many GCSEs)
- Intermediate apprenticeships (GCSE grades 3/D or above in maths and English usually, but not always, required)
- Traineeships, Supported internships or pre-apprenticeships

Depending on your grades once completing these qualifications you will have the option to progress on to a level 3 qualification. Always check with your course provider for entry requirements.

I have 5 or more GCSEs grade 4-9 (A\*-C), including maths and English

Level 3 qualifications

- A Levels
- BTEC Level 3 Diploma or Extended Diploma
- T Levels
- Advanced apprenticeships

**Next steps**  
Once you have completed your level 3 qualification, you will have the choice to continue your education and apply for university (if you have the right grades) or go into employment.

- University (Degree, Masters, Doctorate)
- Higher or Degree Apprenticeships
- Gap year (see page 20)
- Go into employment

# Preparing for your future

## Skills in demand

Having the right set of skills in life can be just as important as having the right qualifications.

The great thing about skills is that throughout your life you will have already built a range of skills and

knowledge without even realising it and there is always opportunities for you to develop them.

Future job roles may require a certain set of skills. Take some time to look at the table below which shows the top ten essential skills that will be in demand in

the future and think about how you can get ready to develop these in preparation of employment and training.

Rank	Skill	Attributes covered
1 =	<b>Problem solving/decision making</b>	Able to find solutions to a challenge (reasoning, judgement, decision making)
	<b>Critical thinking/analysis and evaluation</b>	Able to appraise, dissect, synthesise, interpret (information literacy)
	<b>Communication</b>	Able to speak, listen, write, present effectively
4	<b>Collaboration/cooperation/teamwork</b>	Able to work and interact effectively with others
5	<b>Creativity/innovation/originality</b>	Able to think around a challenge or issue/come up with new ideas
6	<b>Leadership/management</b>	Able to lead people (including social influence), systems (including project planning) and Change
7	<b>Self-motivation/learning orientation</b>	Being a 'self-starter', open to learning new things, keen to develop, aims high
8 =	<b>Flexibility/adaptability</b>	Able to adapt to change, change direction
	<b>Resilience/optimism/persistence</b>	Able to cope with adversity/uncertainty, remain positive, keep trying, manage stress
10	<b>Empathy/social perceptiveness</b>	Able to appreciate/understand others' perspectives and needs

The Skills Imperative 2035: what does the literature tell us about essential skills most needed for work?

### List the top 3 skills you currently have

- 1 \_\_\_\_\_
- 2 \_\_\_\_\_
- 3 \_\_\_\_\_

### List the top 3 skills you need to develop

- 1 \_\_\_\_\_
- 2 \_\_\_\_\_
- 3 \_\_\_\_\_

## Volunteering

Volunteering is a great option for developing skills and gaining valuable experience. It involves doing an activity that requires spending time (unpaid) doing something that aims to benefit the environment or someone/organisations.

Volunteering can be done at any age but can be particularly useful for young people who are thinking ahead for their future, especially when considering personal statements, CVs, and making career choices.

## Where can you find opportunities

### Team Lambeth

There are several organisations and community networks that are active throughout the borough. <https://beta.lambeth.gov.uk/your-community/get-involved/volunteering>

### NHS Youth Volunteering

NHS organisations are opening up volunteer roles for young people from the age of 16, and some now offer youth volunteering programmes for 16 and 17-year-olds. <https://www.england.nhs.uk/get-involved/get-involved/volunteering/>

## The National Citizen Service (NCS)

A programme open to all 16 and 17 year olds in England. It helps you to build skills for work and life, while taking on new challenges and meeting new friends.

These programmes can normally be found during the summer and autumn period. Visit <https://wearencs.com/>



# Academic qualifications explained

## What are A Levels?

A Levels are subject based qualifications that can lead to university, further study, training or work. You will have the option of choosing between three or four subjects. People often take a mix of new subjects and ones they did well in at GCSE. Course entry requirements, teaching and assessment depend on the subject.

## How are A Levels graded?

A Levels are graded A\*-E, these are all regarded as pass grades and gain UCAS points towards university entrance.

## Which A Levels should I study?

Choose subjects which you will enjoy studying and think you will do well in, combined with subjects that could be relevant to your future choice. If you have a particular university course in mind, it is vital you check the entry requirements beforehand as you may need to study specific areas.

## What are Facilitating Subjects

Some subjects are most commonly required for entry to a range of degree courses than others. These are known as 'facilitating' subjects because choosing them leaves open a wide range of options for university study. Top universities often ask for at least one A Level to be in a facilitating subject.

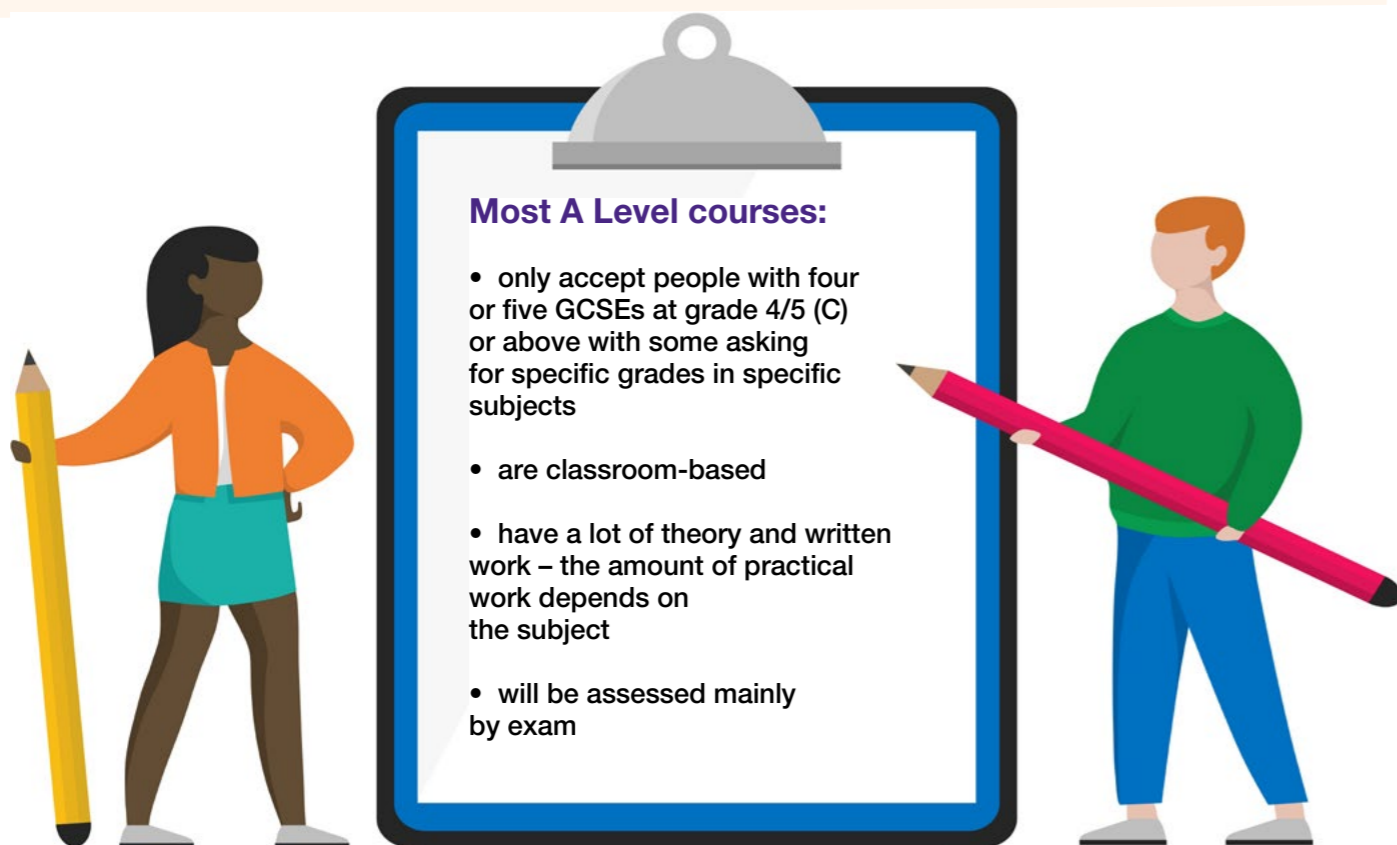
## The Russell Group

Represents 24 leading UK universities and defines facilitating subjects as:

- English Literature
- History
- Modern Languages (eg French, German, Spanish, etc)
- Classical languages (eg Latin, Ancient Greek)
- Maths & Further Maths
- Physics
- Biology
- Chemistry
- Geography

The Russell Group's guide Informed Choices provides students with information, advice and guidance about their post-16 subject choices.

<https://goo.gl/r4d4Ha>

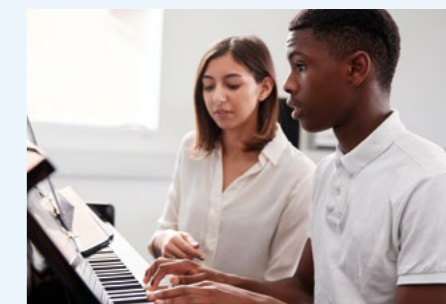


**Most A Level courses:**

- only accept people with four or five GCSEs at grade 4/5 (C) or above with some asking for specific grades in specific subjects
- are classroom-based
- have a lot of theory and written work – the amount of practical work depends on the subject
- will be assessed mainly by exam



# Vocational qualifications explained



**Vocational and technical qualifications are designed to give you the skills and knowledge to do a specific job, work in a particular industry or acquire more general skills to do a variety of jobs.**

All further educational colleges and some sixth forms will offer vocational qualifications as an alternative pathway to accessing higher learning.

## What are BTECs?

BTEC courses combine practical learning with subject and theory content. They are for people who may be interested in a specific sector or industry but are unsure of what that would look like in a job.

## How are BTECs graded?

BTECs are graded using a Pass (P), Merit (M), Distinction (D) and Distinction\* (D\*) scale.

## Applied General Qualifications

These offer the opportunity for a hands-on learning experience across broad vocational areas rather than a single subject.

The categories include level 3 qualifications, such as BTECs and OCR Cambridge, in areas such as:

- Finance, Enterprise, Business & Law
- Health & Social Care and Child Development & Wellbeing
- Engineering, Manufacturing Technologies & Transport Operations
- Information & Communication Technology
- Science & Mathematics

## What are T Levels?

T Levels are qualifications that offer you a mixture of classroom learning and 'on-the-job' experience during an industry placement of around 3 months.

## How are T Levels graded?

T Levels are graded using a Pass (P), Merit (M), Distinction (D) and Distinction\* (D\*) scale.

La Retraite 6 and South Bank UTC are offering a range of T Level courses, which include:

## La Retraite 6

- Digital (production, design, and development)
- Education, Childcare and Midwifery
- Construction
- Media, Broadcast and Production (September 2023)
- Legal Services (September 2023)

## South Bank UTC (September 2023)

- Construction
- Health and Science

Southbank UTC is also sponsored by Guy's & St Thomas' and King's College NHS Trusts, and have their own pathways into allied health professions, nursing, and midwifery at London South Bank University (LSBU).

# Where to find Lambeth post-16 provision

## Sixth form

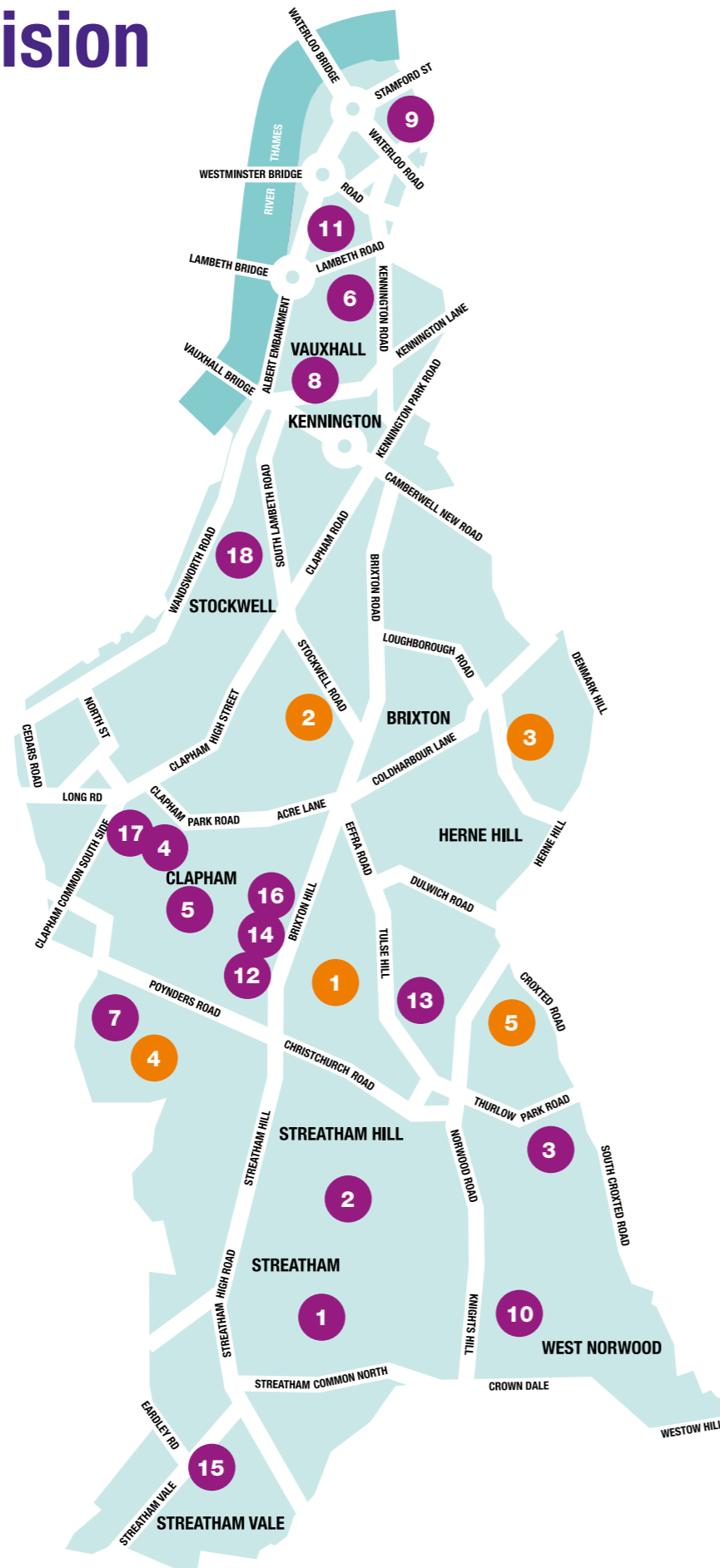
- 1 Bishop Thomas Grant Catholic Secondary School
- 2 Dunraven School
- 3 The Elmgreen School
- 4 The Elms Academy (formerly known as Lambeth Academy)
- 5 Harris Clapham Sixth Form
- 6 King's College London Mathematics School
- 7 La Retraite 6
- 8 Lilian Baylis Technology School
- 9 The London Nautical School
- 10 The Norwood School
- 11 Oasis Academy
- 12 South Bank UTC
- 13 St Martin-in-the-Fields High School for Girls
- 14 Trinity Academy
- 15 Woodmansterne

## Further education colleges

- South Bank Colleges:
- 16 Lambeth College – Brixton Centre
  - 17 Lambeth College – Clapham Centre
  - 18 London South Bank Technical College

## Special schools

- 1 Elm Court School
- 2 Lansdowne School
- 3 The Michael Tippett School
- 4 The Michael Tippett College
- 5 Turney School
- 6 Vanguard



# Where you can attend sixth form



**Bishop Thomas Grant School**  
Belltrees Grove, SW16 2HY  
020 8769 3294  
[www.btg.ac](http://www.btg.ac)  
Twitter: @BTGSixthForm



**Dunraven School**  
94/98 Leigham Court Rd, SW16 5SR  
020 8696 5600  
[www.dunraven.org.uk](http://www.dunraven.org.uk)  
Twitter: @Dunraven\_School



**The Elmgreen School**  
Elmcourt Road, SE27 9BZ  
020 8766 5020  
<https://www.the-elmgreen-school.org.uk/>  
Twitter: @elmgreenschool



**The Elms Academy**  
Elms Road, SW4 9ET  
020 7819 4700  
[www.theelmsacademy.org.uk](http://www.theelmsacademy.org.uk)  
Twitter: @TheElmsAcademy  
(Formally known as Lambeth Academy)



**St Martin-In-The-Fields High School For Girls**  
(Mixed sixth form)  
155 Tulse Hill, SW2 3UP  
020 8674 5594  
<http://www.stmartins.academy>  
Twitter: @smithfsfg



**Harris Clapham Sixth Form**  
73 Kings Avenue, SW4 8DX  
0204 542 4900  
<https://www.harrisclaphamsixthform.org.uk/>  
Twitter: @HAClaphamSixth



**King's Math School**  
80 Kennington Rd, SE11 6NJ  
020 7848 7346  
[www.kingsmathsschool.com](http://www.kingsmathsschool.com)  
Twitter: @kingsmathschool



**La Retraite 6** (Mixed Sixth Form)  
Atkins Road, SW12 0AB  
020 8673 5644  
<https://sixthform.laretraite.co.uk/>  
Twitter: @LaRetraite6



**Lilian Bayliss Technology School**  
323 Kennington Lane, SE11 5QY  
020 7091 9500  
[www.lilianbaylis.com](http://www.lilianbaylis.com)  
Twitter: @LBTS\_SCHOOL



**Trinity Academy**  
57 Brixton Hill, SW2 1QS  
020 3126 4993  
<https://www.trinity.futureacademies.org>  
Twitter: @TrinityAcad



**The London Nautical School**  
61 Stamford Street, SE1 9NA  
020 7928 6801  
[www.lns.org.uk](http://www.lns.org.uk)  
Twitter: @londonnautical



**The Norwood School**  
Crown Dale, SE19 3NY  
020 8670 9382  
[www.thenorwoodschool.org](http://www.thenorwoodschool.org)  
Twitter: @NorwoodLambeth



**Oasis Academy**  
75 Westminster Bridge Rd, SE1 7HS  
020 7921 4200  
<https://www.oasisacademysouthbank.org/>  
Twitter: @OasisSouthBank



**South Bank UTC**  
For students aged 14 – 19 years of age  
56 Brixton Hill, SW2 1QS  
020 7738 6115  
<https://www.southbank-utc.co.uk/>  
Twitter: @SouthBankUTC



**Woodmansterne School & Sixth Form**  
Woodmansterne Road, SW16 5UQ  
020 87641825  
[www.woodmansterne.london](http://www.woodmansterne.london)  
Twitter: @WoodySchool

# Further education college options

College education offers you a truly immersive route into work and higher education. At South Bank Colleges, you have full access to an exciting curriculum that meets the needs of your future.

## London South Bank Technical College (LSBTC)

A £45m college in buzzing Nine Elms, only 5 minutes from the Tube station. You'll experience real life project management, industry-led teaching, employer-led networks, and masterclasses.

Choose from a range of exciting

new courses at our technical college such as:

- Software Development
- Animation and Special Effects
- Engineering and Robotics
- Criminal Investigation and Forensics
- E-sports and more.

The experience and skills you gain at London South Bank Technical

College will set you up to thrive in whatever you decide to do.

Visit [southbankcolleges.ac.uk](https://southbankcolleges.ac.uk) or call **020 7501 5010**.

## London South Bank Technical College

Belmore Street  
Wandsworth Road, SW8 2JY



## Lambeth College

At Lambeth College, recently rated 'GOOD' by Ofsted, you'll become part of the vibrant, diverse community and enjoy professional and technical education covering a range of professional services such as:

- Business
- Accounting
- Beauty
- Health and Social Care
- Teacher Trainin

You'll also receive support to build your confidence, learn in a way that works best for you, and get what you need to enter the world of work.

## Lambeth College

Brixton Centre  
56 Brixton Hill, SW2 1QS

## Clapham Centre

45 Clapham Common South Side  
SW4 9BL



# Special Educational Needs and Disabilities information

Young people with Special Educational Needs and Disabilities (SEND) should have the same chance of success as everyone else. They may just need extra support and consideration to get there. To find out more about making choices, visit <https://beta.lambeth.gov.uk/lambeths-send-local-offer>, where you can discover post-16 provision options and information about staying healthy, becoming independent and taking a full part in the community. Click on I'm a young person, then you can choose:

- Preparing for adulthood
- Post-16 school, college and university
- Training, work and volunteering
- Health and social care
- Life, leisure, having fun
- Have your say, get involved

For help using the SEND Local Offer, email [localoffer@lambeth.gov.uk](mailto:localoffer@lambeth.gov.uk)

To contact Lambeth's SEND team, call **020 7926 9460** or email [sendsupport@lambeth.gov.uk](mailto:sendsupport@lambeth.gov.uk)

Visit <http://www.lambeth.gov.uk/send> to explore Lambeth's new Local Offer.





# Special schools



## Elm Court School

Caters for students with Learning Difficulties with associated social communication needs. Many students have Autism.

Elm Park, SW2 2EF  
020 8674 3412

[www.elmcourt.lambeth.sch.uk](http://www.elmcourt.lambeth.sch.uk)



## Lansdowne School

Caters for students with Learning Difficulties with associated Autistic Spectrum Disorder (ASD).

49 Combermere Road, SW9 9QD  
020 7737 3713

[www.lansdowneschool.co.uk](http://www.lansdowneschool.co.uk)



## The Michael Tippett School

Caters for students with Severe Learning Difficulties (SLD) or Profound and Multiple Learning Difficulties (PMLD).

Heron Rd, Herne Hill, SE24 0HZL  
0207 326 5898

[www.tmts.me.uk](http://www.tmts.me.uk)



## Lambeth College

Offers inclusive learning programmes that are developed to meet your individual needs, aiming to give you more independence and confidence as you learn with us. With only 10 students per class, an on-site learning assistant and experienced teachers are there to support you.

We also offer specialist resources and sensory support, access to speech and language therapists, and other specialist interventions, everything is in place to help you reach your full potential. You can choose to study a range of subjects alongside English, maths, and Information and Communications Technology (ICT) with opportunities to take part in enrichment activities such as sports, dance, or drama. Find out more, visit [www.lambethcollege.ac.uk](http://www.lambethcollege.ac.uk) or call 020 7501 5010.

**Brixton Centre**,  
56 Brixton Hill, SW2 1QS

**Clapham Centre**  
45 Clapham Common South Side  
SW4 9BL  
020 7501 5010  
[www.lambethcollege.ac.uk](http://www.lambethcollege.ac.uk)



## Roots And Shoots

Provides supported vocational training courses for young people between 14-24 with an Educational Health Care Plan (EHCP).

**The Study Programme** (1-3 years for 16-24 year olds) includes a package of accreditation in English, maths, Employability, a Vocational Subject (Retail, Horticulture, Floristry) and access to life and independent skills, work placements and Cooking/Catering.

**The Pre-Supported Internships course** (1 year for 18-24 year olds) focuses on job coaching and work placement opportunities in a range of areas.

**School Links sessions** (14-18 years old) are aimed at school groups seeking extracurricular activities to complement existing timetables. We specialise in teaching practical, independence skills, with a strong environmental and person-centred ethos. We invite applications from young people in Lambeth and across London, particularly those with mild to moderate SEN, other barriers to learning and/or a diagnosis of autism.

For more information  
T: 020 7587 1131  
E: [office@rootsandshoots.org.uk](mailto:office@rootsandshoots.org.uk)  
visit our social media for regular updates about life at Roots!  
[www.rootsandshoots.org.uk](http://www.rootsandshoots.org.uk)  
[www.instagram.com/rootsandshoots1982](http://www.instagram.com/rootsandshoots1982)



## Turney School

Caters for students with Autistic Spectrum Disorder (ASD) with associated communication difficulties and complex global delay.  
Turney Road, SE21 8LX  
020 8670 7220

[www.turneyschool.co.uk](http://www.turneyschool.co.uk)



## Vanguard School

Caters for students with Autistic Spectrum Disorder (ASD)  
Lollard Street, Kennington  
SE11 6QH  
0208 0596 310  
<https://www.autism.org.uk/vanguard>  
[www.autism.org.uk/services/nas-schools/vanguard.aspx](http://www.autism.org.uk/services/nas-schools/vanguard.aspx)



## The Michael Tippett College

Caters for young people aged 19-25 years with Severe Learning Difficulties (SLD) and Profound and Multiple Learning Difficulties (PMLD).

Belthorn Crescent, Weir Road,  
Balham, SW12 0NS  
020 7326 5890

[www.tmts.me.uk/College](http://www.tmts.me.uk/College)

## Mainstream schools with specialist SEND Provision

In Lambeth we also have mainstream schools who offer additional learning support:

**Dunraven School** has additional provision for students with speech and language difficulties

**The Elmgreen School** has additional provision to support students hearing impairment

**The London Nautical School** has additional provision for students with Autistic Spectrum Disorder (ASD) as the primary need.

For a full list of institutions approved to offer SEND provision in and out of the borough go to [www.gov.uk/government/publications/independent-special-schools-and-colleges](http://www.gov.uk/government/publications/independent-special-schools-and-colleges)

# Apprenticeships and Traineeships



## Apprenticeships

Apprenticeships offer you the chance to work for an employer, earn a salary and gain qualifications at the same time. Apprenticeships combine hands-on training in the workplace with off-the-site training with a local college or specialist training provider. Apprenticeships cover over 1,500 different job roles and depending on the level can take between one and five years to complete.

Applying for apprenticeships is different to applying for college or university. Employers will often ask for similar qualifications to a college or university course at the same level, entry requirements will differ depending on the provider.

Employers are often at least as interested in 'soft skills' such as communication, teamwork, and reliability as formal qualifications. At any time, there will normally be well over a thousand vacancies within 10 miles of any address in Lambeth listed at [www.gov.uk/apply-apprenticeship](https://www.gov.uk/apply-apprenticeship) See FAQs for more information.

## Higher Apprenticeships

Higher Apprenticeships are now a serious alternative to full-time higher education for some careers. In London many major employers have Higher and Degree Apprenticeships. More information can be found at <https://goo.gl/Yvsrcc> London South Bank Technical College and Lambeth College, part

of LSBU Group also have links with employers offering apprenticeships [www.lambethcollege.ac.uk/apprenticeships](http://www.lambethcollege.ac.uk/apprenticeships)

## Traineeships

Traineeships are intended to be a stepping stone to an apprenticeship, or other job, for those young people who do not already have the necessary skills. Traineeships can provide employability or 'soft skills', work experience, and help with maths and English. They are usually unpaid but some offer expenses. More information can be found at [www.gov.uk/find-traineeship](https://www.gov.uk/find-traineeship)

# Supported Internships

Supported Internships are study programmes aimed at young people aged 16 to 24 who have an Education, Health and Care Plan (EHCP). Supported internships are a great opportunity to improve the life chances of young people with SEND by supporting them into sustained, paid employment.

You can find out how post-16 education differs from schools and colleges through supported

internships, traineeships and apprenticeships. Whether that be less hours, days and weeks, more places to study, more subjects and range of qualifications.

To find out further information about Supported internships opportunities visit <https://beta.lambeth.gov.uk/children-young-people-and-families/special-educational-needs-and-disabilities/young-adults-14-25-12>

## Preparing for adulthood – Lambeth's SEND Local Offer

Lambeth's new SEND Local Offer web pages have been designed to make that journey easier. They bring together information on the opportunities, services and support available to young people and their families to help make their journey smoother.



# Going to university



You can get support about your university choices, applications and possible alternatives to higher education from your school or college about your options at age 18+.

**Deciding whether to go onto higher education, what and where to study, could be some of the most important decisions you ever make.** With some professions (eg architecture, teaching or medicine) requiring a degree.

For many people, university is also the chance to study a subject they are passionate about. You should choose a university and course based on what is important to you. More information can be found on the UCAS (Universities and Colleges Admissions Service) website <https://goo.gl/ZCe7TY>

## UCAS

Applications to full-time higher education courses in the UK must be made through UCAS. There are many guides to applying online, including: [www.ucas.com/undergraduate/applying-to-university](http://www.ucas.com/undergraduate/applying-to-university)

## Student finance

For information about tuition fees and student loans see the UCAS guide at <https://goo.gl/zyzRSb> and the MoneySavingExpert.com myth busting guide at <https://goo.gl/1BQBb4>

## Open days

There is no substitute for seeing a university for yourself. Open days are designed to give you a real feel for how you will be studying, giving

you the chance to see facilities as well as meeting staff and current students first hand. Events are advertised on a university's website and there is more information at open days, other events and virtual tours at <https://goo.gl/z1TY3D>

## Gap years

Going straight from college or sixth form to university might not be for everyone. Gap years can give you time to focus on what you want to do next and can enhance your CV or university application. Some people travel or work on projects abroad and others might do voluntary work and develop new skills. More information can be found at <https://goo.gl/4epZmY>

# London South Bank University

The Complete University Guide 2021 lists London South Bank University (LSBU) in the top five universities in the UK for graduate prospects.

LSBU provide opportunities for you to be involved with free activities offered by the university throughout the year, including subject taster sessions and Open Days.

The LSBU Group comprises of South Bank Academies, South Bank Colleges, South Bank Enterprises and London South Bank University. Working to one vision, the Group seeks to deliver the educational needs of communities and business locally and globally. In addition, from 2022/2023, South Bank Technical College will provide training opportunities to the next generation of engineers and scientists.

## Degree and course offers

- Applied Sciences
- Arts and Creative Industries
- The Built Environment and Architecture
- Business
- Engineering
- Nursing and Midwifery
- Allied and Community Health
- Law and Social Science

Explore LSBU courses: [lsbu.ac.uk/study/study-at-lsbu/subjects](https://lsbu.ac.uk/study/study-at-lsbu/subjects)

## Short course offers

- Architecture and Construction
- Baking
- Blockchain
- Business and Management
- Creative Arts and Media
- Engineering

Contact course enquiries at: [course.enquiry@lsbu.ac.uk](mailto:course.enquiry@lsbu.ac.uk) or call 0800 923 8888

Admissions: [admissions@lsbu.ac.uk](mailto:admissions@lsbu.ac.uk)

EST 1892  
**LSBU**

**London South Bank University**  
103 Borough Road, SE1 0AA  
For more information visit: [lsbu.ac.uk](https://lsbu.ac.uk)

## Apprenticeships

- Arts and Creative Industries
- Applied Sciences
- The Built Environment and Architecture
- Business
- Engineering
- Health and Social Care
- Law and Social Sciences

You'll get access to work-based learning programmes with the perfect mix of on-the-job practical training and academic teaching. You can choose opportunities from Civil Engineering to Early Years and Business Administration programmes. You'll be able to find something that's just right for you. Apprenticeship team: [apprenticeships@lsbu.ac.uk](mailto:apprenticeships@lsbu.ac.uk)





## Thinking about starting your own business

If you have good business ideas and are determined and ambitious, working for yourself can be very rewarding. It will not be easy though as you are likely to face lots of challenges, particularly in the early stages.

There are opportunities in Lambeth to help you to develop business ideas and start-up:

**The Prince's Trust**, based in Kennington supports young people aged 18-30 who want to start a business <https://goo.gl/Em5YwV>

**Tree Shepherd** and **Hatch Enterprise** are local organisations offering enterprise support to people of all ages. [www.treeshepherd.org.uk](http://www.treeshepherd.org.uk) <https://hatchenterprise.org>

**Shell**, a multi-national organisation with a base in Lambeth (the Shell Centre), provides free online business advice and funding to

young entrepreneurs through Shell LiveWIRE <https://www.livewire.shell/>

**The London Growth Hub** offers a comprehensive list of support available to people starting or growing a business in London. <https://goo.gl/bVdftV>

**Lambeth College** has range of qualifications in business and finance <https://www.southbankcolleges.ac.uk/courses/business-and-accounting>

**Green Man Skills Zone**, based in Coldharbour Lane, offers employment and enterprise support to young people

<https://pathwaygroup.co.uk/>

Help and advice for local business from Lambeth Council at <https://goo.gl/EVdV31>

**Social Enterprises** are businesses that aim to improve communities or the environment. What makes them different from other businesses is that tackling social issues is as important as making money. One benefit of setting up a social enterprise is that you may be able to apply for grants and funding. You can find more information at [www.socialenterprise.org.uk](http://www.socialenterprise.org.uk)

## Ways to access financial support

If you are under the age of 19 you will not have to pay course fees regarding your post-16 options, whether that is if you choose to continue with education or training. However, based on what you decide to do, there could be additional financial support available depending on you or your family circumstances.

**The 16 to 19 Bursary Fund** aims to help young people remain in education or training by providing them with financial support to overcome barriers that may prevent this, such as transport or course equipment costs.

This fund falls under two types of 16-19 bursaries: vulnerable and discretionary. Each will have their own criteria to meet.

**Care to Learn** is a scheme that supports you with the cost of childcare while studying. To be eligible, you must be aged under 20 at the start of your course. For more information visit: <https://www.gov.uk/care-to-learn>

**The Residential Bursary Fund** offers the opportunity to receive help with the cost of accommodation during term time if you are in further education and the course you are studying is far from where you live. You would need to meet the criteria before applying, for more information visit: <https://www.gov.uk/residential-support-scheme/residential-bursary-fund>

Further information and advice can be found at **Lambeth Education Awards and Benefits** page <https://goo.gl/n232JT>, where you can see more details on other avenues for financial support. Or visit the government's 16-19 guidance for financial support at: <https://www.gov.uk/guidance/16-to-19-education-financial-support-for-students>

**Education Health and Care (EHC) Plan** – if you have one in place you will receive funding for further education up to age 25 for support in choosing your next steps and extra help when you are in education, training or work. <https://beta.lambeth.gov.uk/lambeths-send-local-offer/im-parent-or-carer/education-health-care-ehc-plans>



# Your possible future destinations

## Employment in Lambeth

The workforce is always changing, seen with the introduction of new technology and skills for future jobs. These new opportunities are available for you to explore and discover your career pathway. Technology's progression will always continue to impact the working world and being prepared is important.

Having a good idea of what the changing landscape looks like in terms of your career choices and skill development will support you in making informed decisions about your future. Doing your own research will provide a realistic insight of the labour market and how it is likely to change.

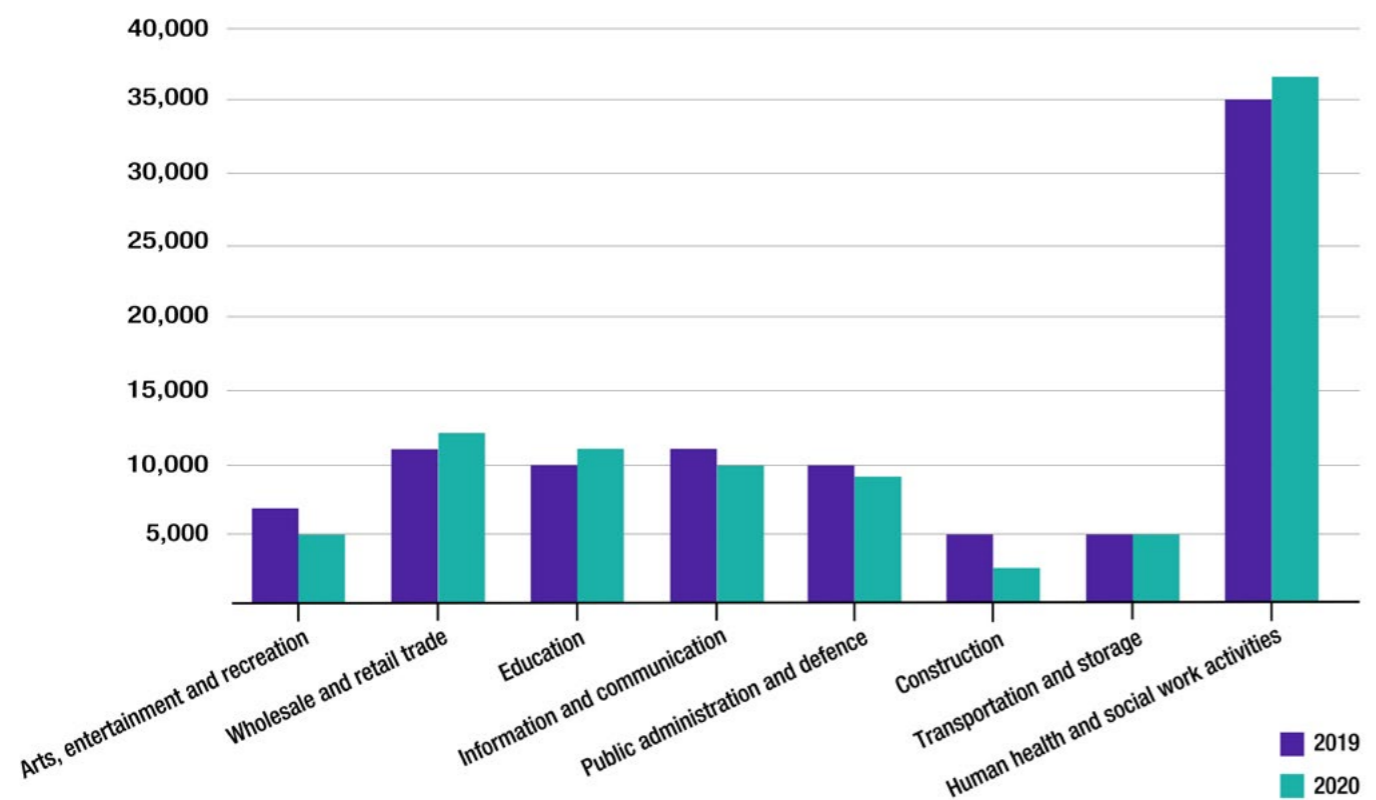
The graph below reflects a snapshot of the Lambeth labour

market in 2019 and 2020, and shows the increases and decreases of demand in different industries changing.

It is beneficial for you to prepare and have an understanding of the demand and skills required in your preferred job industry when thinking about your possible destination.

## Jobs by Industry in Lambeth

Labour Market Profile: Lambeth (2020) ONS



## Study routes

When deciding study or even a career path after finishing your GCSEs, it remains important to understand how the qualifications you choose can affect what you want to do in the future. Between going to university and studying a certain course or undertaking a higher/degree apprenticeship. Below are example of how possible study routes can lead to different industries and jobs.

Industries	Job title and starting salary	Possible study route
Health and Social Care	<b>Paramedic</b> Average starting salary £24,907–£30,615	<ul style="list-style-type: none"> <li>Five GCSEs, including English language, science, and maths at Grade 4 (C) or above</li> <li>Two or three A-levels, including a science subject</li> <li>University paramedic science course at BSc Honours degree level or a degree apprenticeship - student paramedic apprenticeships are very competitive, and each NHS ambulance service trust may have its own individual entry requirements for posts</li> </ul>
	<b>Family support worker</b> Average starting salary £18,000–£24,000	<ul style="list-style-type: none"> <li>A minimum of a level 3 qualification in one of the following: advice and guidance, childcare, community work, counselling, education, health, social care, youth work (check course providers entry requirements)</li> <li>Level 3 apprenticeships in Early Intervention Practitioner or Children, Young People and Families Practitioner</li> </ul>
Teacher Training and Education	<b>Secondary school teacher</b> Average starting salary £25,714–£36,961	<ul style="list-style-type: none"> <li>A minimum of 4 to 5 GCSEs at grade 4 (C) or above, including maths and English or equivalent</li> <li>A degree or equivalent in a subject relevant to your chosen area of teaching</li> <li>Completion of initial teacher training to achieve qualified teacher status (QTS). Also available undergraduate BA/BSc Hons that include QTS (check providers before applying)</li> <li>You can also gain QTS through a Postgraduate Certificate in Education (PGCE) or taking a salaried teacher training route. For more information visit: <a href="http://getintoteaching.education.gov.uk">getintoteaching.education.gov.uk</a></li> </ul>
	<b>Teaching assistant</b> Average starting salary £17,364–£20,000	<ul style="list-style-type: none"> <li>GCSE or equivalent in maths or English, and experience of working with children</li> <li>It could be useful to gain the following qualifications:                             <ul style="list-style-type: none"> <li>Level 1 Award in Preparing to Work in Schools</li> <li>Level 2 Award in Support Work in Schools</li> <li>Level 3 Award in Supporting Teaching and Learning in Schools</li> </ul> </li> <li>An intermediate or advanced apprenticeship (Levels 2 and 3) to train to be a teaching assistant</li> </ul>
Computing, Technology and Digital	<b>Software developer/programmer</b> Average salary £24,000–£70,000	<ul style="list-style-type: none"> <li>4 or 5 GCSEs at grades 9 to 4 (A* to C), or equivalent, including English, maths</li> <li>A Level in Computing, T Level in Digital Production, Design and Development</li> <li>A degree or higher apprenticeship in Computer Science, Information Technology or Software Development</li> </ul>
	<b>IT support technician</b> Average salary £18,000–£35,000	<ul style="list-style-type: none"> <li>2 or more GCSEs at grades 9 to 3 (A* to D), or equivalent, for a level 2 course. 4 or 5 GCSEs at grades 9 to 4 (A* to C), or equivalent, including maths and English, for a level 3 course</li> <li>Level 2 Certificate in ICT Systems Support, Level 3 Diploma in ICT Professional Competence, T Level in Digital Support Services</li> <li>Advance apprenticeships in IT solutions technician or IT communications technician.</li> </ul>

Job Profiles, Prospects / Explore Careers, NCS



# FAQs

## What happens if I don't get the right GCSEs?

Many A Levels and other level 3 courses in sixth forms and at college require you to have at least 5 GCSE's or more at grades 9 – 4 (A\*-C).

If you have grades at 3 – 1 (D-G), or less than 5 GCSE passes, there are still many options for you to choose from:

- Studying level 2 courses at college for a year to gain the necessary equivalent qualifications to GCSEs to then allow you to progress to level 3 courses
- Re-sit your GCSEs and begin a level 3 course after gaining the necessary qualification
- Start an apprenticeship at level 2

## Can I still go to university if I choose to do a T Level course?

Yes, universities welcome T Level qualifications, although it is likely that the degree course chosen will be directly linked to your T Level course subject, with the understanding that you must have achieved a level 3 in your course.

## Do I have to stay with the sixth form that I went to school with?

No. It is good to think about what you would like to do next after taking your GCSEs. There are a range of options that you can choose from, and this includes looking at courses from different sixth forms and colleges.

## What does the labour market mean?

The labour market explains the availability of employment and labour, in relation to supply and demand.

## What are UCAS points?

UCAS points convert your qualifications and grades into a numerical value. Many qualifications (but not all) have a UCAS value, which will vary dependent on the qualification size, and the grade you achieved. This numerical value is used by Higher Education course providers to assess whether you meet their entry requirements for a particular course.



## Where can I get advice about what to do after my GCSEs?

Your school should offer informed and impartial advice about your next steps after GCSEs. You can also visit our Lambeth Youth Hubs for information advice and guidance on next steps:

<https://lambethmade.org/lambeth-youth-hub/>  
or the National Career Service <https://nationalcareers.service.gov.uk/explore-your-education-and-training-choices>

## Back on Track Team

Personal advisors can provide one to one support and guidance to help you get into employment, training and jobs. Please email Lambeth's Back on Track team [BackOnTrack@lambeth.gov.uk](mailto:BackOnTrack@lambeth.gov.uk)

## Where can I find out about local apprenticeship opportunities?

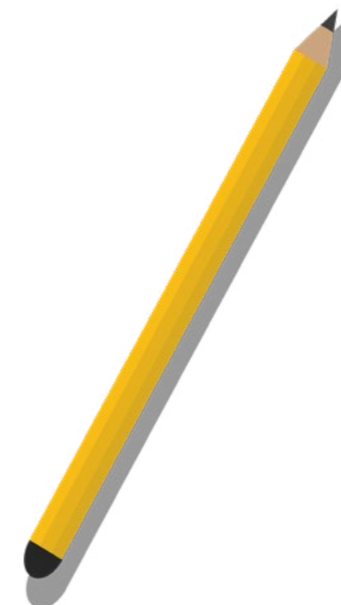
You can visit our Opportunity Lambeth page (<https://opportunity.lambeth.gov.uk/>) to discover more about apprenticeships around Lambeth.

You can also make an appointment at LDN Apprenticeships, one of Lambeth's Youth Hubs, to find out more around apprenticeship progression email [youthhub@ldnapprenticeships.com](mailto:youthhub@ldnapprenticeships.com) or visit [www.ldnapprenticeships.com/youth-hub](http://www.ldnapprenticeships.com/youth-hub)

or call **020 3821 5200**

Address: 278-280 South Lambeth Road Stockwell, SW8 1UJ

In preparation for your next steps, use this checklist to help plan your activities.



## Checklist

- I have asked for advice or attended a careers interview about my post-16 options
- I have attended/or plan to attend college and sixth form open events
- I have a 'Plan B' in place if I do not achieve the entry requirements for my first choice
- I have checked application deadlines and know when they need to be submitted by
- The colleges/sixth forms that I have been looking at are easy to travel to, and I can afford the travel costs

“

Lambeth is a great place to study for all our young residents, offering rich and diverse education, training and career opportunities.”



<https://beta.lambeth.gov.uk/schools-education>